

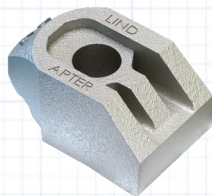
Ulster Rugby Stadium Signage

Lindapter Girder Clamps provided a solution for connecting a signage support framework to the existing stadium steel roof.



Project Background

Location: Kingspan Stadium, Belfast, Northern Ireland
Product: Type AF Girder Clamp
Client: Ulster Rugby
Engineer, Fabricator & Installer: Lappin Engineering Ltd

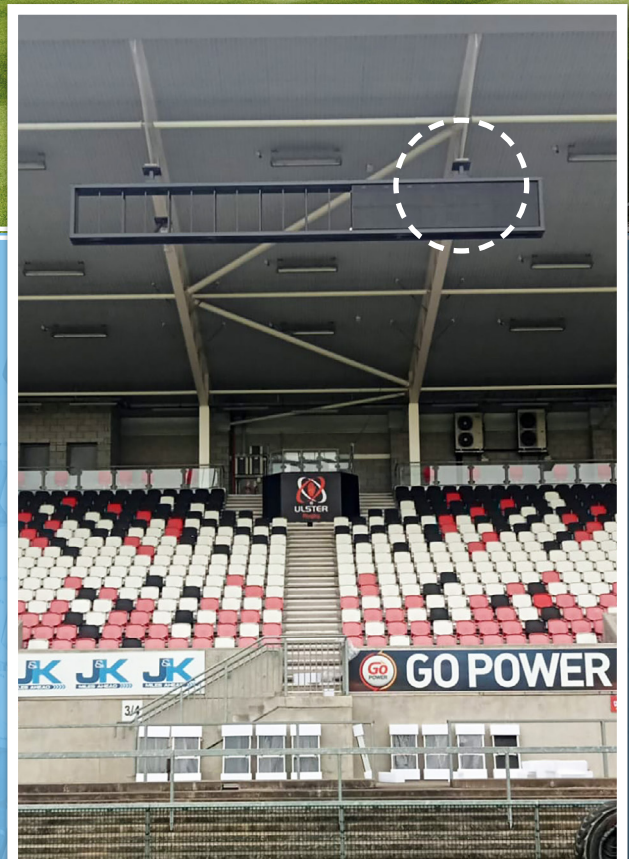


Since its opening in 1923, the Ravenhill Stadium now known as the Kingspan Stadium, has been home to Ulster Rugby. The capacity of the stadium is 18,196 and it has undergone renovations in 2009 and again between 2012 and 2014. In 2023 Ulster Rugby wanted to improve the match day experience for their loyal fans by integrating additional modern digital media screens within the stadium.

Client Requirement

Ulster Rugby engaged with SVI Digital who in turn charged Lappin Engineering to fabricate and install a media screen support framework to the sloped stadium roof.

Lappin wanted to avoid welding or drilling in the field at height for many reasons including time, cost and safety therefore an alternative connection method was required to safely connect the support framework to the original steel roof structure.



Media screens being installed into the support framework

Ulster Rugby Stadium Signage

Design Solution

Lindapter's technical support team were approached by Lappin Engineering, the steelwork fabricators for the project, and asked to submit a steel clamping design. Lindapter proposed a girder clamp solution that involved connecting the support framework to the steel beams of the original stadium structure via hollow structural sections (HSS) with end plates and Type AF girder clamps in a 4-bolt configuration.



Installation

Lappin used two "Cherry Pickers" to gain access to the underside of the stadium roof from the edge of the rugby pitch to install the support framework. Type AF girder clamps were used to secure the support framework for the digital media screens to the original structural steel. The Type AF high slip resistance clamps provided the necessary load capacities to prevent the framework sliding down the sloped beams of the roof. Once the framework was in the correct position the girder clamps could be installed very easily and quickly from a "Cherry Picker" by simply tightening the bolts with standard hand tools to the recommended torque.

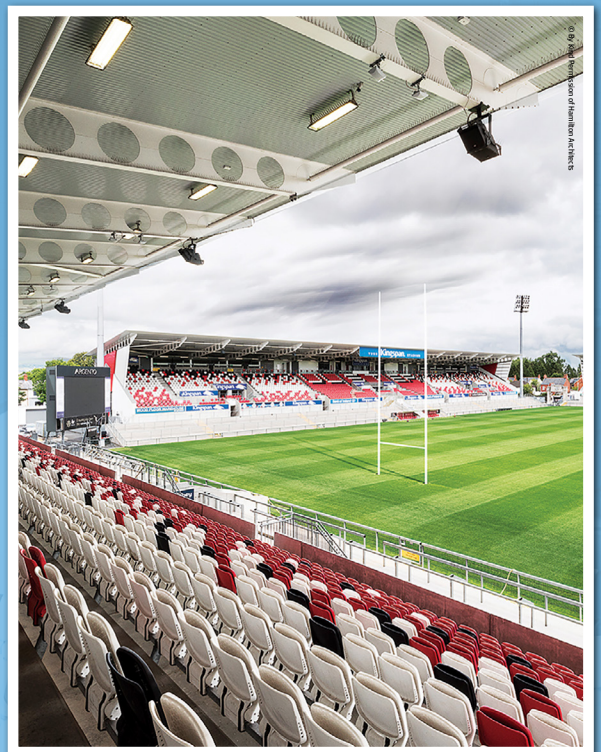


[Click here to watch the installation video >>>](#)



Result

The Lindapter solution provided a fast, safe installation and avoided costly drilling or welding in the field that would have been difficult to carry out at this height. The Type AF heavy duty girder clamps have independent technical accreditations, including ICC-ES, CE mark and TÜV approvals. These accreditations verify the tensile and slip load capacities that led to a strong and reliable installation.



Key Benefits

- ✓ No welding/drilling in the field
- ✓ Quick and easy installation
- ✓ Cost effective solution
- ✓ No hot works required
- ✓ HDG finish for high corrosion protection

