

Roland Garros Stadium Expansion

Lindapter Hollo-Bolts provided a solution for securing handrails to Structural Hollow Sections.

Project Background

Location: Paris, France
Market: Stadiums / Arenas
Product: Hollo-Bolt® by Lindapter®
Client: French Tennis Federation
Contractor: VINCI Construction



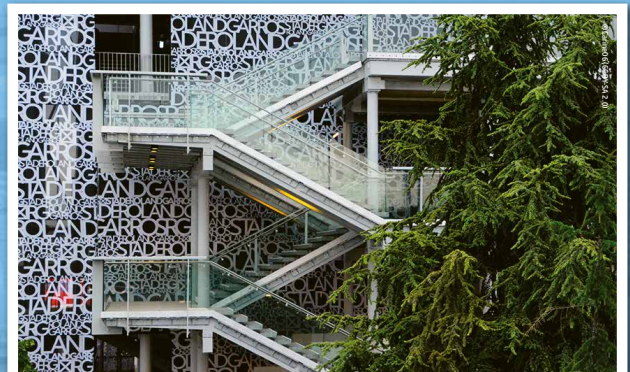
The world famous Roland Garros Stadium is a complex of tennis courts located in Paris, that hosts the French Open, a Grand Slam championship tennis tournament. The facility was constructed in 1928 and was in need of modernisation to keep its Grand Slam status. The French Tennis Federation proposed a significant expansion which included the reconstruction of the main Philippe-Chatrier Court and stadium.

Client Requirement

The stadium expansion required a huge amount of new steelwork, much of which was specified as structural hollow section (SHS) to provide an ideal balance between strength, functionality and aesthetic appearance. The SHS would be used in many areas of the project including the stairways and concourses, and it was here that the steel contractor needed a solution for connecting 3km of stainless steel handrails to the SHS.



Hollo-Bolts fix the "L" shaped steel section to the SHS



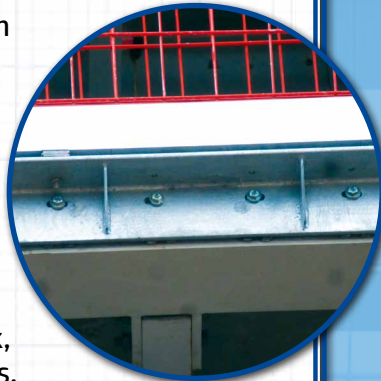
Expansion of the stadium, including new stairways

Roland Garros Stadium Expansion

Design Solution

The engineer designed an “L” shaped steel section which would be fixed to the SHS to provide a suitable place for the handrail supports to be connected.

Hollo-Bolt, the original expansion bolt for Structural Steel that requires access to only one side of the SHS, was specified for the connection of the steel section to the SHS. Hollo-Bolt offers fast installation, high strength capacity, and a wide range of independent technical accreditations, including CE mark, TÜV and ICC-ES Seismic approvals.



Installation

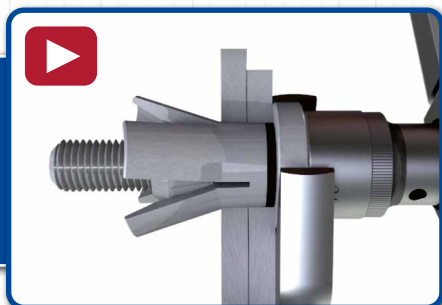
Holes in the SHS and “L” shaped steel sections were pre-drilled off-site by the steelwork fabricator, to make installation onsite a simple process.

The contractor offered up the steel sections to the SHS before inserting hexagonal head, size M12 Hollo-Bolts with a JS500 zinc plated finish.

Installation was quick and easy as each bolt is simply inserted into the pre-drilled holes and tightened with a torque wrench to the recommended tightening torque to provide the necessary clamping force.



[Click here to watch the installation video >>>](#)



Result

The specification of Hollo-Bolts provided a quick and easy solution for connecting the “L” shaped steel sections to the SHS. The contractor was able to secure the handrail supports to the steel section and then complete the installation of the stainless steel handrails.



The stadium was completed in February 2020

Key Benefits

- ✓ Fast, cost saving installation from one side
- ✓ High corrosion protection finish
- ✓ Unique high clamping force design
- ✓ High resistance to shear and tension
- ✓ CE Mark, TÜV and ICC-ES Seismic approvals



[Click here for more details](#)