

Lidl Headquarters

Lindapter Girder Clamps provided an easy to install solution for a sun protection cladding system.

Project Background

Location: Heilbronn, Germany

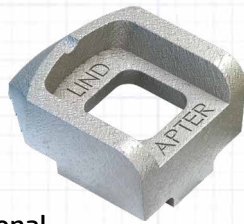
Market: Façades & Cladding

Product: Type A Girder Clamps

Project Value: €238 million

Main Contractor: Leonhard Weiss GmbH & Co KG

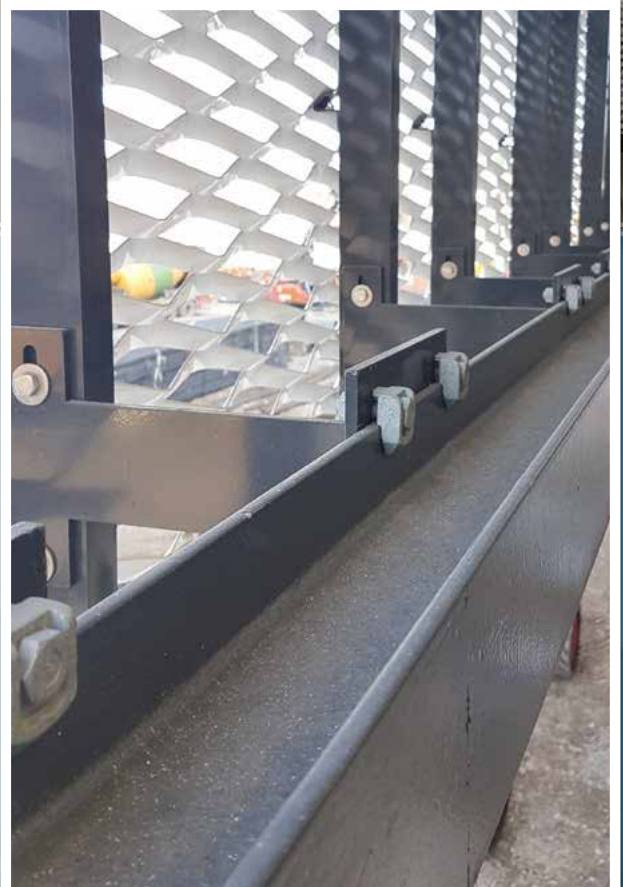
Specialist Installer: Colt International



German discount supermarket chain, Lidl, has built a brand new headquarters on a 4.6ha area with a gross floor area of 130,000m² in Germany. The project involved the construction of an office building, meeting rooms, a reception facility, cafeteria, underground parking facilities, fitness centre, logistics facilities and outdoor parking facilities.

Client Requirement

Part of the development included a requirement for a façade sun protection cladding system for the multi-storey staff car park. Main contractor Leonhard Weiss sub-contracted this building element to Colt International, a specialist cladding designer and installer. The challenge was to find a suitable method of connecting the cladding system to the steel structure on the car park, and one that was easy to install.



No drilling or welding on-site was required

Lidl Headquarters

Design Solution

The engineers at Colt International designed a T-shaped steel bracket with an end plate incorporating four pre-drilled holes.

Lindapter Type A Girder Clamps with M12 bolts were specified for the end plate connection to achieve the required tensile resistance and safe working load. A hot dip galvanised (HDG) finish was also specified for the Girder Clamps to provide a high level of corrosion protection.



The decision to use Lindapter Type A Girder Clamps was influenced by independent technical accreditations, which include the CE Mark (ETA-13/0300), TÜV and Lloyd's Register approvals.

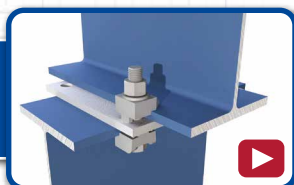
Installation

Secondary steel sections were fixed onto the existing concrete façade in preparation for the T-shaped brackets to be installed. The brackets were connected to the steel sections using Lindapter Type A Girder Clamps through the end plates in a four bolt configuration. Installation was quick and easy as each bolt is simply inserted into the predrilled holes with the Type A on one end and nut on the other.



The recessed top of the clamp holds the bolt captive while the nut is tightened with a torque wrench to the recommended tightening torque. This arrangement provided the necessary standoff distance between the original structure and allowed the large cladding panels to be attached to the other end of the T-shaped brackets and complete the installation.

[Click here to watch the installation video >>>](#)



Result

Lindapter Type A Girder Clamps provided a drilling and weld free connection on-site that was quick and easy to install.

The clamps are fully adjustable which gave the contractor the ability during installation to manoeuvre the brackets into their final positions before fully tightening them.



The completed cladding system

Key Benefits

- ✓ Recessed top holds the bolt captive while the nut is tightened
- ✓ Fully adjustable on-site to provide an easy installation
- ✓ Supports up to 78.8kN tensile in four-bolt configuration
- ✓ HDG finish offers a cost effective and low maintenance solution
- ✓ CE Mark (ETA-13/0300), TÜV and Lloyd's Register approvals



[Click here for more details](#)