

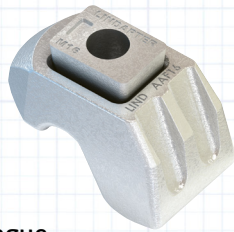
Citi Field Digital Transformation

Lindapter Girder Clamps provided a solution for connecting the largest video display board in Major League Baseball to the New York Mets stadium.



Project Background

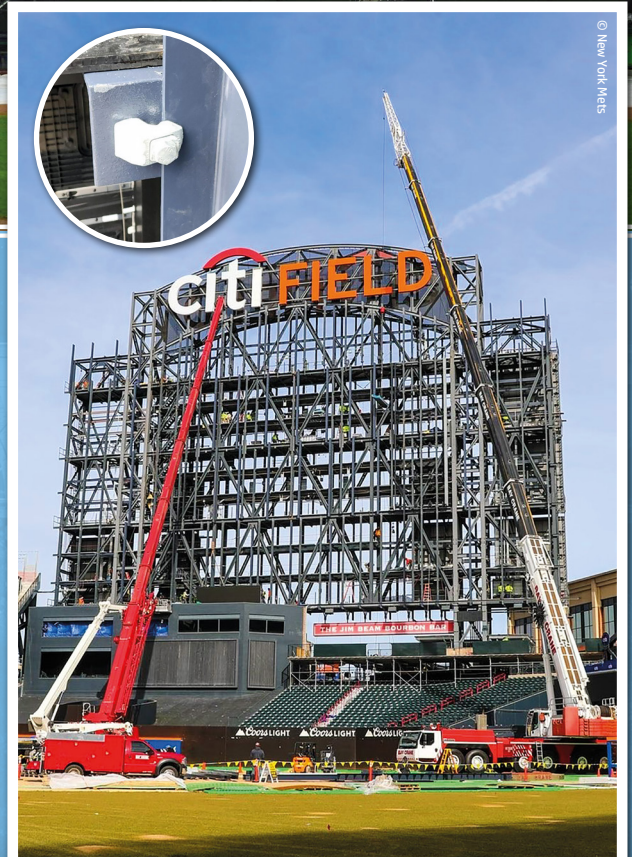
Location: Queens, New York, USA
Product: Type AAF Girder Clamp
Client: New York Mets
Specifier: Samsung Electronics
Installer: Summit Specialized Installations Inc.



Citi Field is the home of the Major League Baseball team, New York Mets. In 2020 the team was purchased by billionaire Steve Cohen who has invested heavily in the team to bring success on the field. Cohen also wanted to invest in technology to digitally transform the stadium and improve the game day experience for fans, so in partnership with Samsung, a phased upgrade began in 2021.

Client Requirement

In late 2022 the digital transformation entered a new phase which involved replacing the old scoreboards in the outfield with the latest 4K display boards. Working with Samsung the proposal included the installation of the largest video display board in Major League Baseball to the existing secondary steel framework. The installer wanted to avoid onsite welding or drilling at height for many reasons including time, cost and safety therefore an alternative connection method was required to safely connect the display board to the existing steel frame.

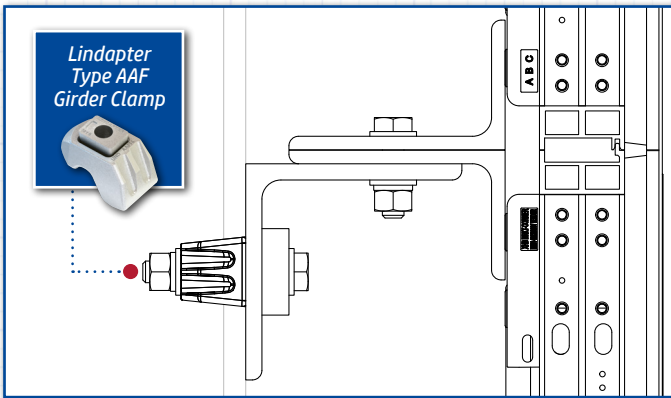


Type AAFs connect the angle brackets to the steel columns

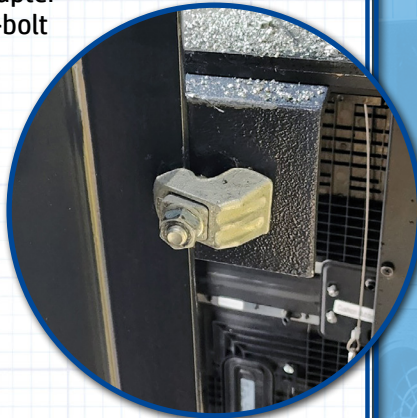
Citi Field Digital Transformation

Design Solution

Samsung had previously worked with Lindapter on other successful projects and experienced the time-saving benefits of Lindapter's connection solutions, therefore confidently specified girder clamps again on this project.



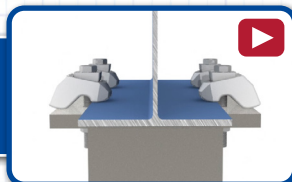
The design included simple angle brackets bolted to the display board frame and then connected to the existing W10 steel columns using Lindapter Type AAF girder clamps in a 2-bolt configuration. Type AAF was specified as they were able to provide the necessary slip resistance and could self-adjust to accommodate the different thicknesses of column flanges which varied onsite.



Installation

The installer used 2,600 Type AAF size M12 Girder Clamps to connect the angle brackets to the existing steel columns. Installation was quick and easy as the connection assemblies could be positioned close to where they were needed before final adjustments were made and the clamps fully tightened using a calibrated torque wrench. To complete the installation the video display board frame was then connected to the angle brackets followed by installation of the LED panels.

[Click here to watch the installation video >>>](#)



Result

The Lindapter solution provided a fast, safe installation and avoided costly onsite drilling or welding that would have been difficult to carry out at this height.

Type AAF was able to provide the necessary slip resistance and the self-adjusting feature proved to be extremely useful for the installer who could use one product throughout the project to overcome the different flange thicknesses of the columns, again reducing installation time and cost.



Installers of the 4K display boards could avoid welding or drilling at height onsite

Key Benefits

- ✓ No onsite welding or drilling
- ✓ Quick and easy installation
- ✓ Self-adjusts to suit flange thickness
- ✓ Cost effective solution
- ✓ No hot works required

